

AVAILABLE RAIL SERVED SITE

EVERGREEN L.P. SITE
OWASSA ROAD, COUNTY HWY. 29, EVERGREEN, CONECUH, AL, 36401



Description

Sewer is approx. 1.1 mi. from site. Completion to site will take approx. 3 months. CSX mainline rail passes along the western border of the site.

Comments

Sale / Lease

For Sale: Yes
Sale Price: \$ 1,000,000.00 Total
Pricing Information: Includes 100,000 sq. ft building on site.

Property Details

Latitude: 31.475600
Longitude: -86.937100
Total Acreage: 123 Acre(s)
Available Acres: 110 Acre(s)
Largest Tract Available: 110 Acre(s)
Smallest Tract Available: 110 Acre(s)
Expandable:
Wetlands:
Phase 1 Audit Done: Yes

Utilities

Electric Provider: Southern Pine Electric Co-op
Electric Provider 2:
Natural Gas Provider: South Alabama Gas
Natural Gas Size of Main: 4"
Water Provider: Evergreen Utilities
Water Size of Main: 10"
Telecommunications Provider: AT&T
Fiber Available:
DSL Available: Yes
Sewer Provider:
Sewer Size of Main: 6"

Interstate/Highway

Interstate: I-65
To Interstate (miles): 2.00 Mile(s)
Interstate #2:
To Interstate #2 (miles):
Highway: 83
To Highway (miles): 4.00 Mile(s)
State Highway:
To State Highway (miles):

Rail

Carrier: CSX Transportation
Rail 1 Track Status:
Rail 2 Track Status:

Zoning

Zoning: None

Port

Nearest Port:
Dock Distance:

Advantage Alabama

6 Interstates converge in Alabama

All Communities within 2 hours of a commercial airport

92 Public-use airports

5 Class 1 railroads and multiple short line railroads

Deep water port on the Gulf of Mexico

One of the longest inland waterway systems

Right-To-Work state



For more information, please contact:

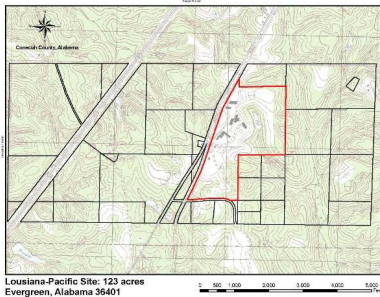
Project Director, Buildings, Sites, and Communities Database
Greg Blalock
205-943-4750
gblalock@edpa.org

Economic Development Partnership of Alabama
1320 1st Avenue South
Birmingham, AL 35233
Greg Blalock
Project Director
P 205.943.4700
gblalock@edpa.org
<https://www.edpa.org>

AVAILABLE RAIL SERVED SITE

EVERGREEN L.P. SITE

OWASSA ROAD, COUNTY HWY. 29, EVERGREEN, CONE CUH, AL, 36401



Advantage Alabama

6 Interstates converge in Alabama

All Communities within 2 hours of a commercial airport

92 Public-use airports

5 Class 1 railroads and multiple short line railroads

Deep water port on the Gulf of Mexico

One of the longest inland waterway systems

Right-To-Work state

WIN with Alabama

For more information, please contact:

Project Director, Buildings, Sites, and Communities Database
Greg Blalock
205-943-4750
gblalock@edpa.org

Economic Development Partnership of Alabama
1320 1st Avenue South
Birmingham, AL 35233
Greg Blalock
Project Director
P 205.943.4700
gblalock@edpa.org
<https://www.edpa.org>